

## Low Profile Semi-Shield Power Inductors ~ SQH3015S



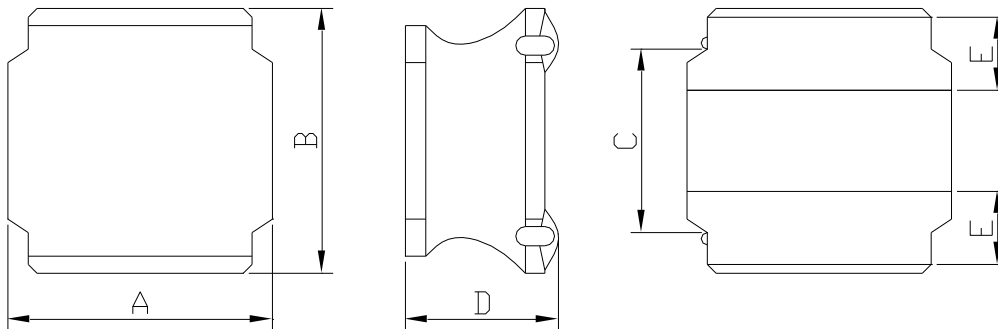
### PART NUMBERING SYSTEM

(AEC-Q200)

<b>SQH</b>	<b>3015S</b>	—	<b>100M</b>	—	<b>LF</b>
TYPE	DIMENSIONS		INDUCTANCE		LEAD FREE

### SHAPES AND DIMENSIONS

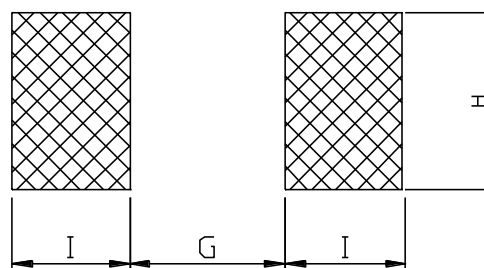
UNIT : mm



A=3.1 Max. B=3.1 Max. C=1.9±0.2 D=1.5 Max. E=0.75 Ref.

### RECOMMENDED PATTERNS

UNIT : mm



G= 1.40 H= 2.70 I = 0.80

### FEATURES

- Low profile and small inductors 低高度和小型化電感器 ( 3.1mm Max. square and 1.5mm Max. height )
- High performance in low profile with high energy storage and low DC resistance  
高性能低薄型設計 · 具有高能量儲存和低直流電阻
- Magnetic shielding allows high-density mounting 磁屏蔽設計可實現高密度安裝
- Automotive grade available 提供汽車級別的產品
- Ideal for DC-DC converter choke coil for portable equipment ( DVDs , DSC , Cellular , PDAs )  
適用於攜帶式設備 ( DVD 、 DSC 、 手機 、 PDA ) DC-DC 轉換器扼流圈



## Low Profile Semi-Shield Power Inductors ~ SQH3015S



### SPECIFICATION TABLE

(AEC-Q200)

PART NUMBER	INDUCTANCE (μH)	DCR (mΩ) (Max.)	Isat(A) (Typ.)	Irms(A) (Typ.)	TEST FREQ. (f)
SQH3015S-1R0N-LF	1.0±30%	36	2.10	2.10	100KHz/1V
SQH3015S-1R5N-LF	1.5±30%	48	1.80	1.82	100KHz/1V
SQH3015SH-1R5N-LF	1.5±30%	100	2.30	1.70	100KHz/1V
SQH3015S-2R2M-LF	2.2±20%	72	1.48	1.50	100KHz/1V
SQH3015SN-2R2M-LF	2.2±20%	78	1.80	1.50	100KHz/1V
SQH3015S-3R3M-LF	3.3±20%	96	1.21	1.23	100KHz/1V
SQH3015SH-3R3M-LF	3.3±20%	115	1.32	1.10	100KHz/1V
SQH3015S-4R7M-LF	4.7±20%	144	1.02	1.04	100KHz/1V
SQH3015S-6R8M-LF	6.8±20%	192	0.87	0.88	100KHz/1V
SQH3015S-100M-LF	10±20%	276	0.70	0.71	100KHz/1V
SQH3015SN-100M-LF	10±20%	325	0.87	0.71	100KHz/1V
SQH3015S-150M-LF	15±20%	432	0.56	0.56	100KHz/1V
SQH3015SH-150M-LF	15±20%	456	0.58	0.75	100KHz/1V
SQH3015S-220M-LF	22±20%	624	0.47	0.47	100KHz/1V
SQH3015S-330M-LF	33±20%	1008	0.39	0.37	100KHz/1V
SQH3015S-470M-LF	47±20%	1608	0.32	0.30	100KHz/1V

- Isat : DC current at which the inductance drops 30%(typ) from its value without current.
- Irms : The temperature rise current value is the DC current value having temperature increase up 40°C temperature rise from 25°C ambient.
- Operating temperature range -40°C to +125°C , Electrical specifications at 25°C .

